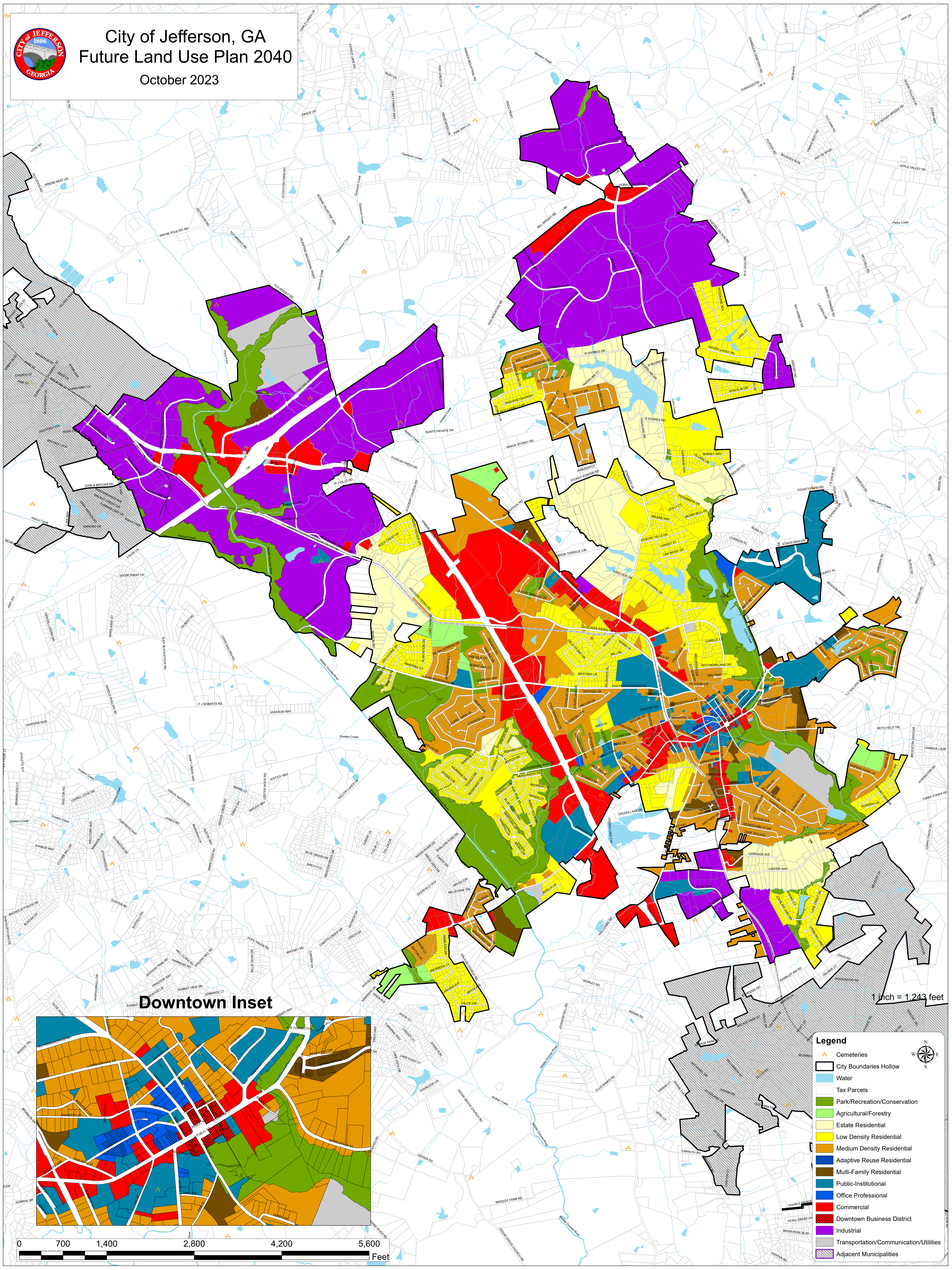


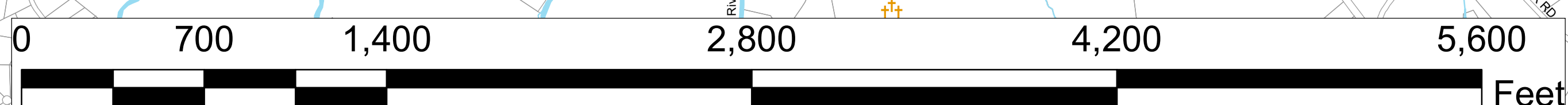
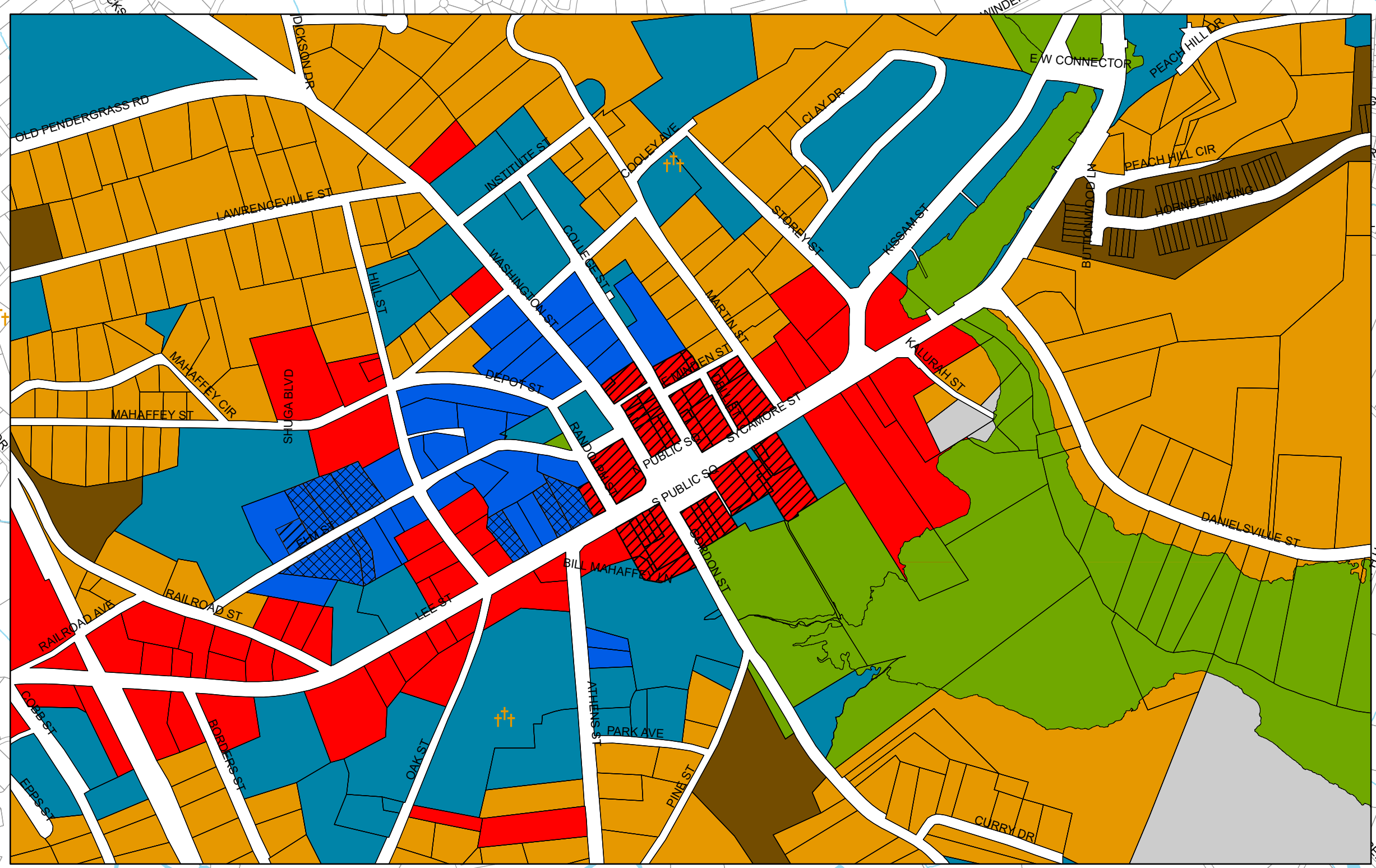


City of Jefferson, GA Future Land Use Plan 2040

October 2023



Downtown Inset



1 inch = 1,243 feet

Legend

- Cemeteries
- City Boundaries Hollow
- Water
- Tax Parcels
- Park/Recreation/Conservation
- Agricultural/Forestry
- Estate Residential
- Low Density Residential
- Medium Density Residential
- Adaptive Reuse Residential
- Multi-Family Residential
- Public-Institutional
- Office Professional
- Commercial
- Downtown Business District
- Industrial
- Transportation/Communication/Utilities
- Adjacent Municipalities