

Official Zoning Map of the City of Jefferson, Georgia

Date of Adoption: February 23, 2015 (R-15-J01)

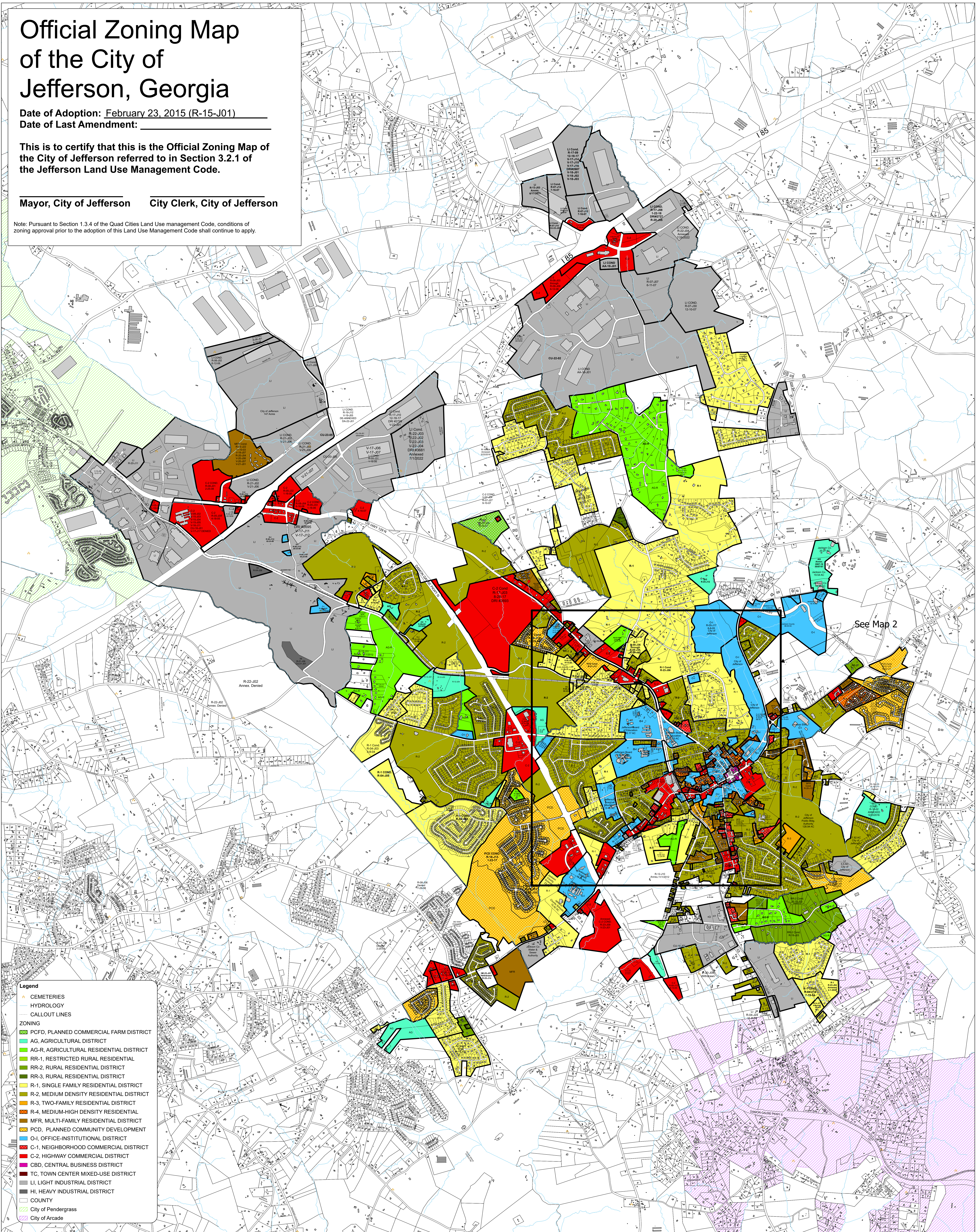
Date of Last Amendment: _____

This is to certify that this is the Official Zoning Map of the City of Jefferson referred to in Section 3.2.1 of the Jefferson Land Use Management Code.

Mayor, City of Jefferson

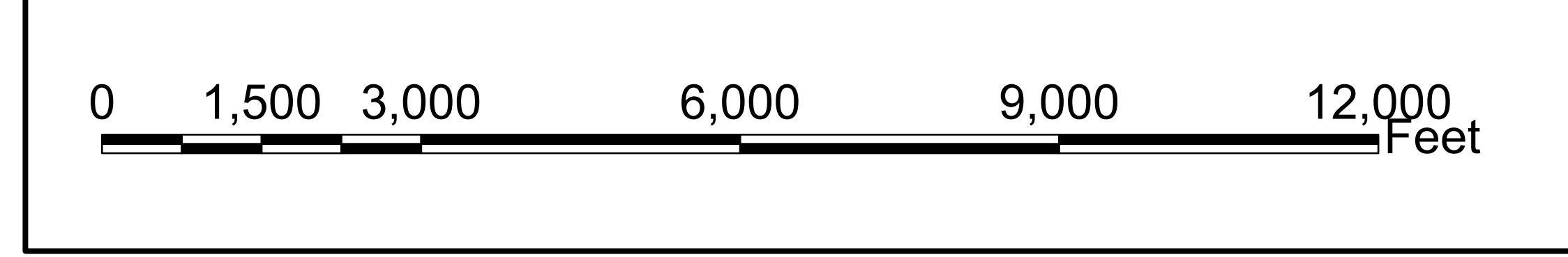
City Clerk, City of Jefferson

Note: Pursuant to Section 1.3.4 of the Quad Cities Land Use management Code, conditions of zoning approval prior to the adoption of this Land Use Management Code shall continue to apply.

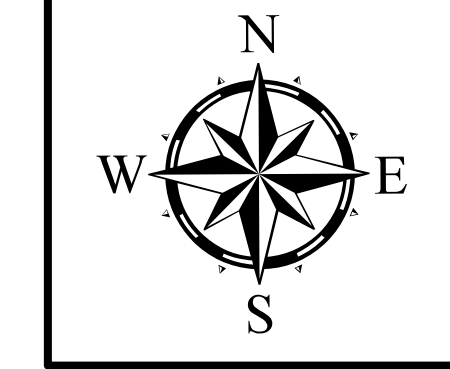


See Map 2

- Legend**
- ▲ CEMETERIES
 - HYDROLOGY
 - CALLOUT LINES
 - ZONING**
 - PCFD, PLANNED COMMERCIAL FARM DISTRICT
 - AG, AGRICULTURAL DISTRICT
 - AG-R, AGRICULTURAL RESIDENTIAL DISTRICT
 - RR-1, RESTRICTED RURAL RESIDENTIAL
 - RR-2, RURAL RESIDENTIAL DISTRICT
 - RR-3, RURAL RESIDENTIAL DISTRICT
 - R-1, SINGLE FAMILY RESIDENTIAL DISTRICT
 - R-2, MEDIUM DENSITY RESIDENTIAL DISTRICT
 - R-3, TWO-FAMILY RESIDENTIAL DISTRICT
 - R-4, MEDIUM-HIGH DENSITY RESIDENTIAL
 - MFR, MULTI-FAMILY RESIDENTIAL DISTRICT
 - PCD, PLANNED COMMUNITY DEVELOPMENT
 - O-1, OFFICE-INSTITUTIONAL DISTRICT
 - C-1, NEIGHBORHOOD COMMERCIAL DISTRICT
 - C-2, HIGHWAY COMMERCIAL DISTRICT
 - CBD, CENTRAL BUSINESS DISTRICT
 - TC, TOWN CENTER MIXED-USE DISTRICT
 - LI, LIGHT INDUSTRIAL DISTRICT
 - HI, HEAVY INDUSTRIAL DISTRICT
 - COUNTY
 - City of Pendergrass
 - City of Arcade



1 inch = 1,259 feet



**City of
Jefferson, GA**



Layout & Mapping By
Jackson County GIS Department
67 Athens St
Jefferson, GA 30549
Phone: (706)-367-1877 Fax: (706)-367-2578
Email: jlogan@jacksoncountygov.com